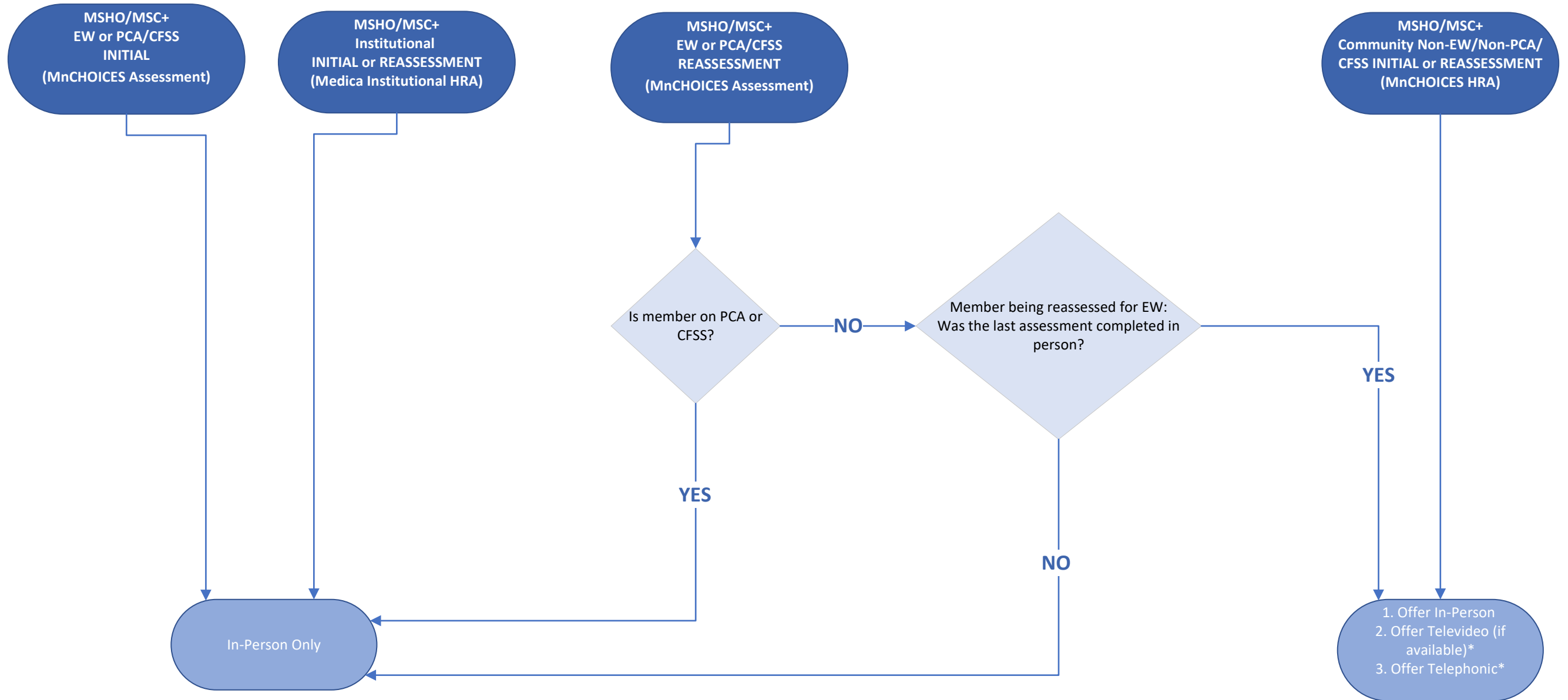


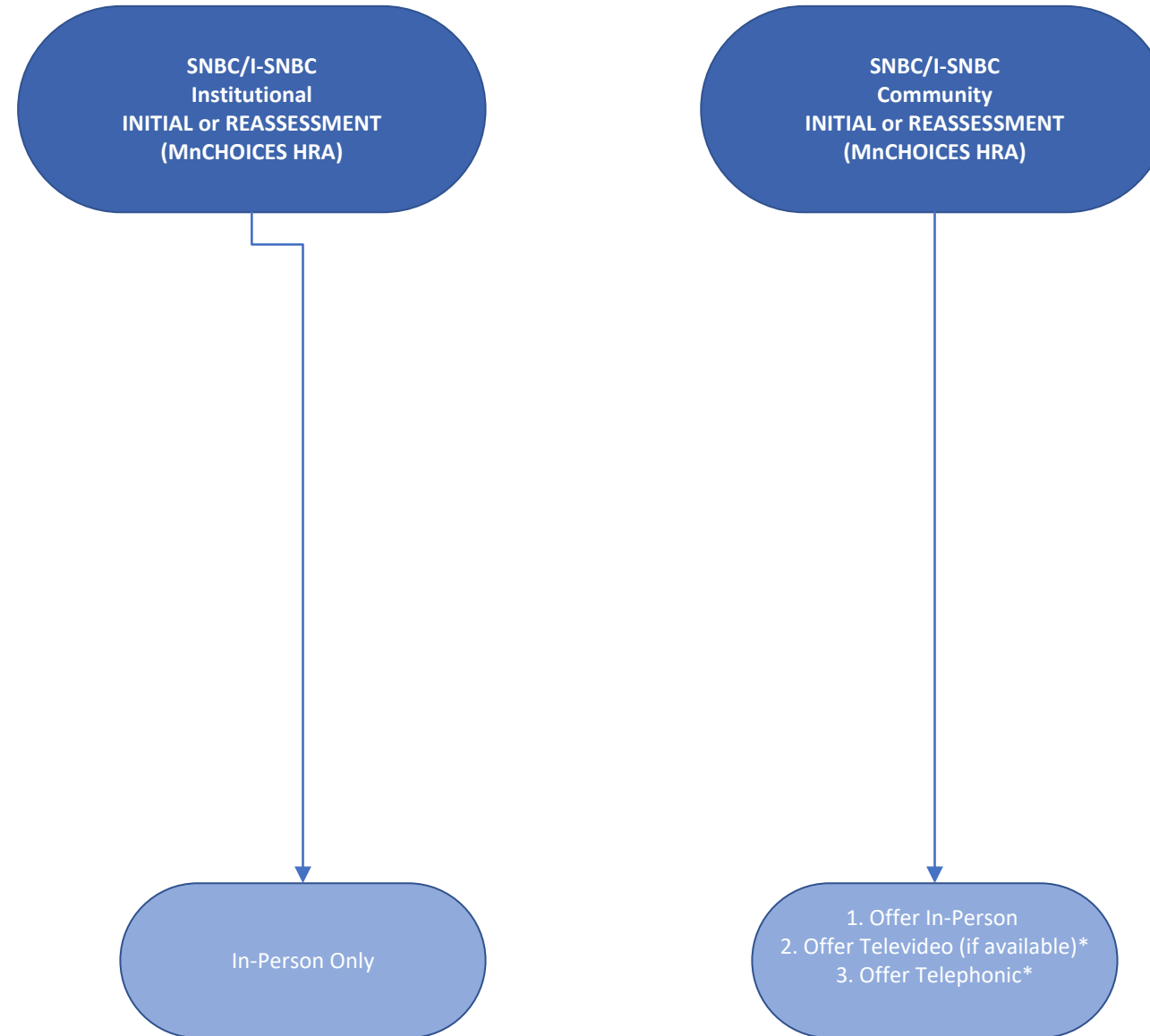
MSHO AND MSC+ ASSESSMENT METHODS



*Annual in-person visit requirement applies to MSHO EW members even if a remote reassessment is permitted in a given year. Also, Care Coordinators must document the assessment method, including the member's refusal to complete the assessment in-person, if applicable

See Medica's MSHO/MSc+ Assessment Schedule Policy for Additional Guidance

SNBC and I-SNBC ASSESSMENT METHODS



*Care Coordinator must document the assessment method, including the member's refusal to complete the assessment in-person, if applicable

See Medica's SNBC/I-SNBC Assessment Schedule Policy for Additional Guidance